



MSAD 6

Facilities Master Plan

Community Forum #1
June 1, 2023

Agenda

1. What is a Facilities Master Plan?
2. Goals
3. Overview of Process
4. Schedule
5. Discussion
6. Next Steps

1 What is a Facilities Master Plan?



What is a Facilities Master Plan?

Assessing and analyzing options to determine the most effective use of resources now and in the future. This is achieved through:

- Identification of District goals
- Enrollment Studies
- Analyzing space utilization
- Evaluation of existing facilities
- Assessment of current and future educational visioning and programming
- Long term facilities solutions that address the districts goals and are the most effective use of resources.

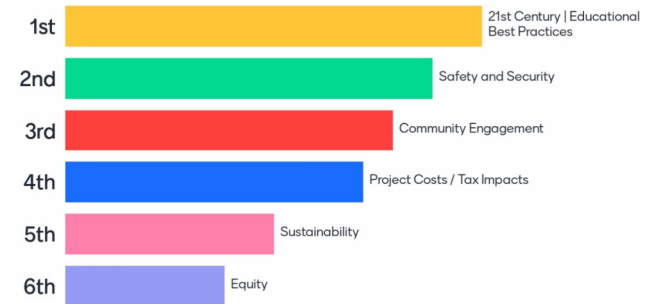
2 Goals

2

Project Goals

- Determine the most effective use of resources now and in the future.
- Plan supported by community and backed up by data
- Explore all options
- Solutions driven by:
 - Enrollment Projections
 - Pedagogy
 - Increased efficiency and equity with newer/fewer buildings and centralized locations
 - Schools and sites as resources for extracurricular events (athletics, the arts, etc.), community, and BE pride
 - Improved instruction and climate through differentiation, innovation, safety, and security
 - Increased efficiency and equity with full-time staffing
 - Increased flexibility, educationally and spatially, to promote learning and collaboration
- Align with State funding sources - Be prepared for 2024 State application

How would you rank the following priorities?



What steps do you think the district needs to take to achieve the project goals?

What is the Need for the State Application?

Part I: Application Information, Summary of Long-Range Facilities Plan

Part II: Educational Program Information on Affected Facility(s)

Part III: Facility Information

Part IV: Comprehensive 10-Year Enrollment Analysis

Part V: Facility Maintenance and Capital Improvement Plans

Part VI: Professional Facilities Studies/ Assessment

Part VII: Instructions, Timeline & Facility Location



2017 – 2018 Rating Cycle Application
Major Capital Improvement Program
Division of School Facilities
October, 2016

Application Submission Requirements
PLEASE SUBMIT IN SPIRAL BINDER.

| | PAGE |
|---|------|
| Part I: Application Information, Summary of Long-Range Facilities Plan | 1-2 |
| Part II: Educational Program Information on Affected Facility(s) | 2 |
| Part III: Facility Information (provide attachment and include a picture of the school) | 13 |
| Part IV: Comprehensive 10-Year Enrollment Analysis (provide attachment) | 23 |
| Part V: Facility Maintenance and Capital Improvement Plans | 25 |
| Part VI: Professional Facilities Studies/Assessment (not required) | 25 |
| Part VII: Instructions, Timeline & Facility Location | 25 |

Part I: Applicant Information, Summary, & Requirements

A: Application Information

School Administrative Unit: RSU #23 – Old Orchard Beach
School Name & Address: **Loranger Memorial School**, 148 Saco Avenue, Old Orchard Beach, ME 04064
Superintendent: John Suttie Phone: (207) 934-4461
Superintendent's Fax: (207) 934-3705 Superintendent's Email: jsuttie@rsu23.org
Principal: Mike Flaherty Phone: (207) 934-4848
Facilities Resource Person: Mark Beaudoin Phone: (207) 934-5751

An application for the Major Capital Improvement Program may only be submitted for a single school. If the proposed construction or major renovation project affects other school(s), the affects need to be addressed in Section II of this application. The School Facilities Services Team will take this into consideration and may visit the other affected schools.

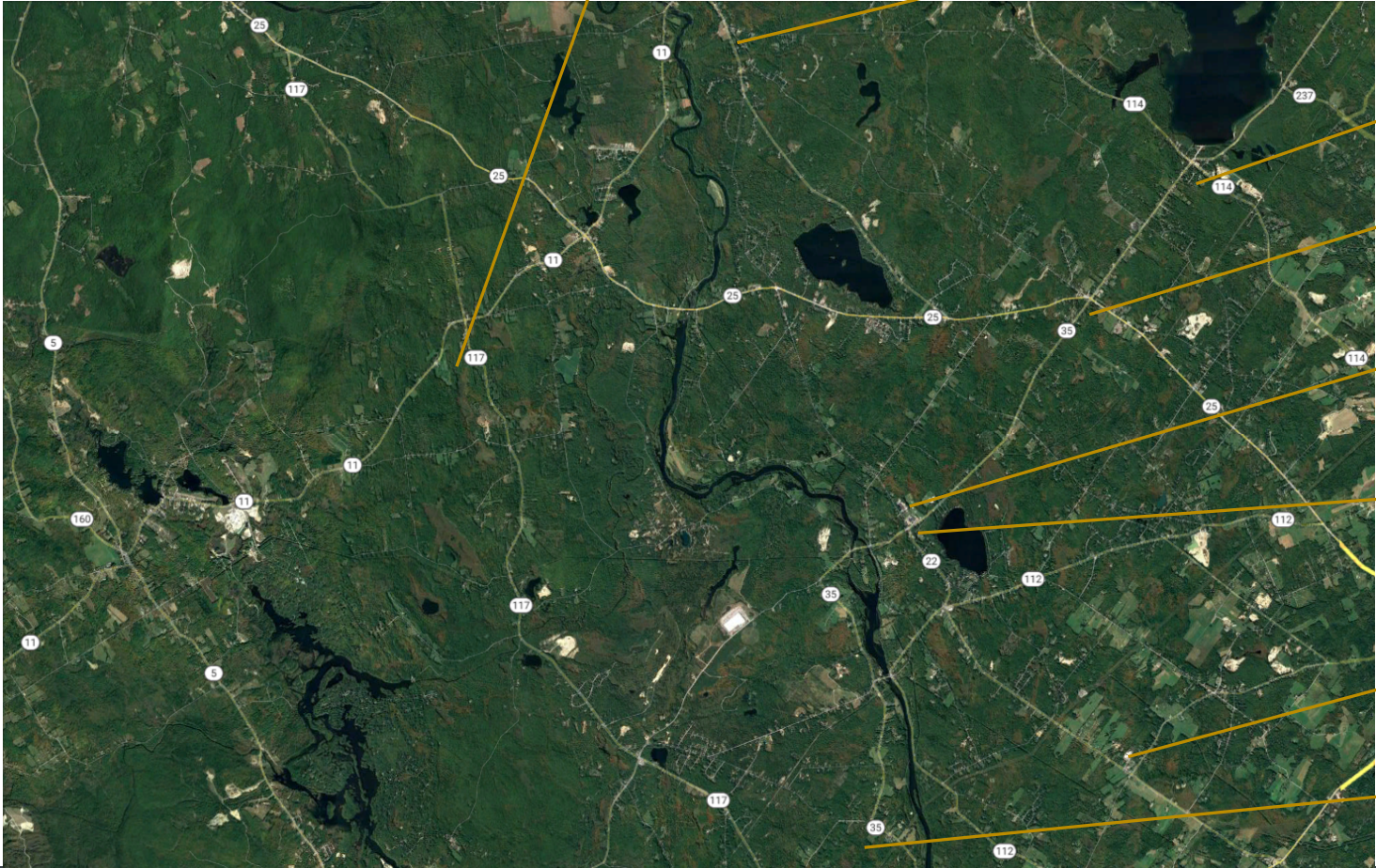
After careful study of our school facility needs, the board of directors/school committee has agreed to proceed with the attached application (please include a copy of the board action with this application).

Date of Vote: 4/11/17 Superintendent's Signature: John Suttie Date: 4/11/17
Results of Vote: 5-0 In Favor

Your Schools

HB Emery School

Steep Falls School



Edna Libby ES

George E Jack School

Bonny Eagle HS

Bonny Eagle MS

Buxton Center ES

Hollis ES

Bonny Eagle High School: Dashboard

BONNY EAGLE HIGH SCHOOL

GRADE LEVEL
CONFIGURATION

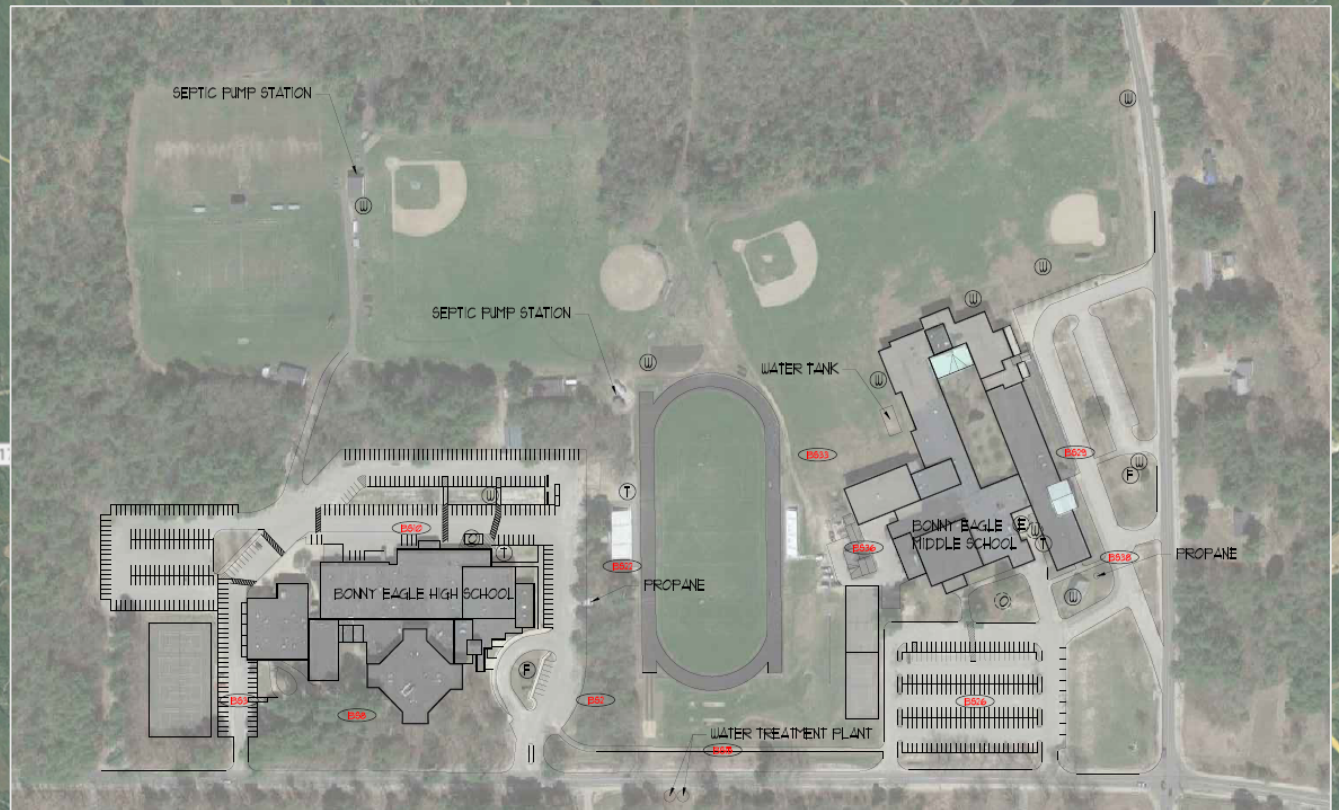
9-12

OF STUDENTS

1,012

LOCATION

Standish, ME



Bonny Eagle Middle School: Dashboard

BONNY EAGLE MIDDLE SCHOOL

GRADE LEVEL
CONFIGURATION

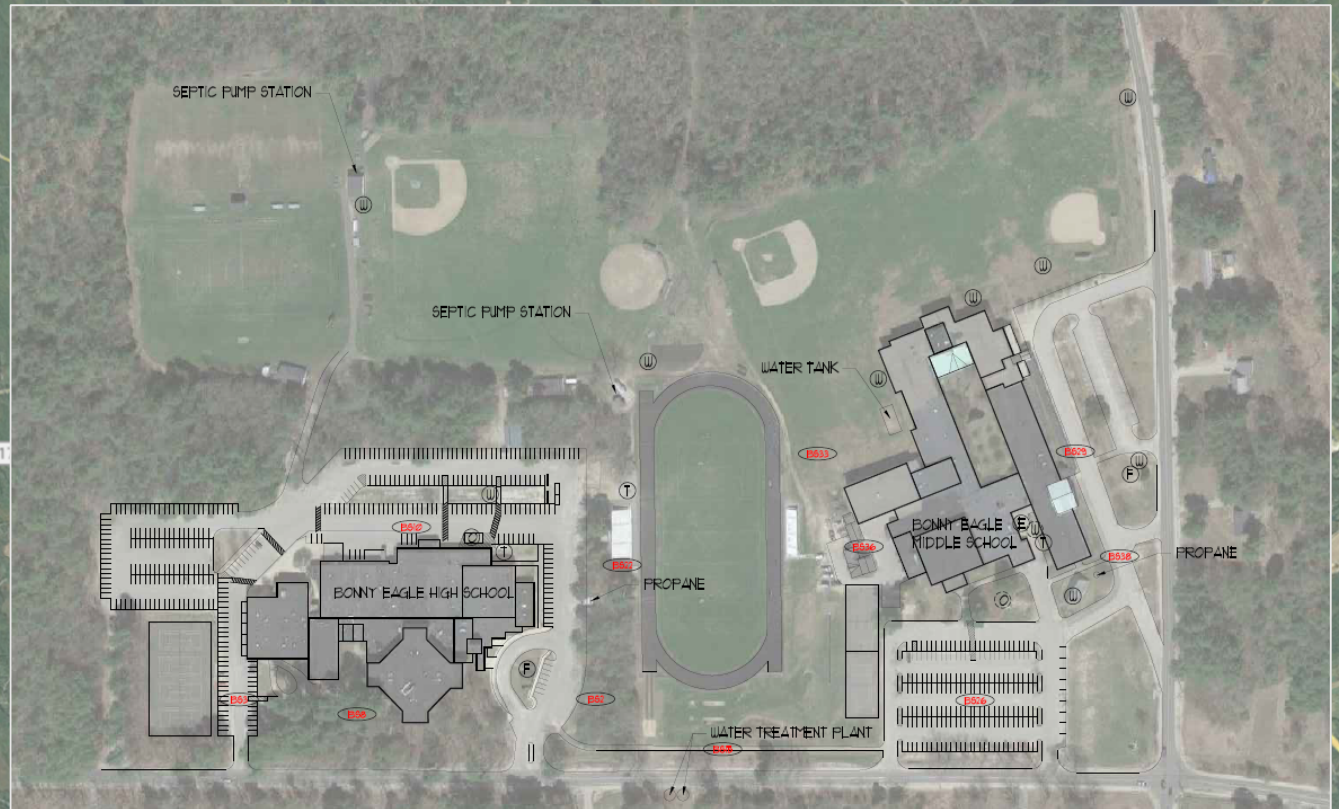
6-8

OF STUDENTS

731

LOCATION

Buxton, ME



Hollis Elementary School: Dashboard

HOLLIS ELEMENTARY SCHOOL

GRADE LEVEL
CONFIGURATION

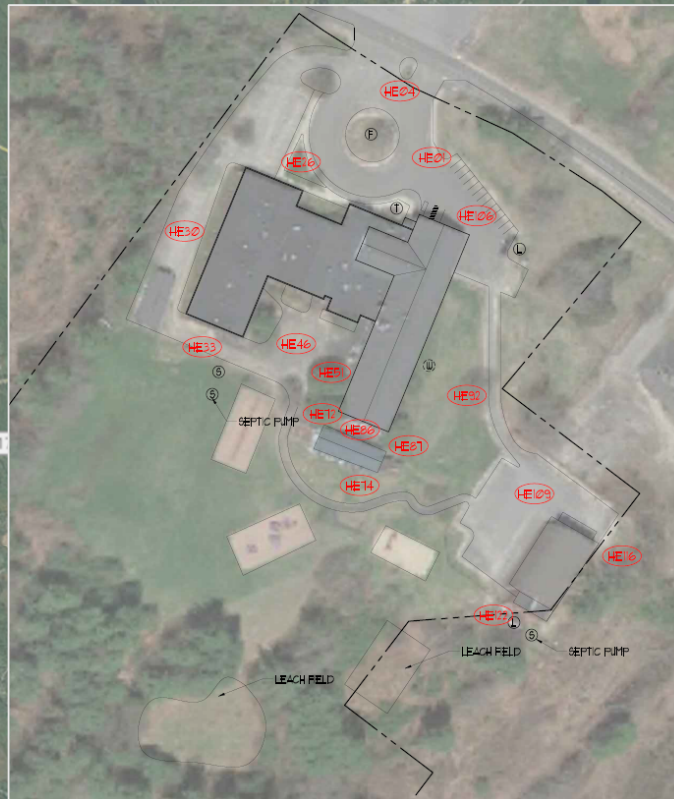
PK-5

OF STUDENTS

296

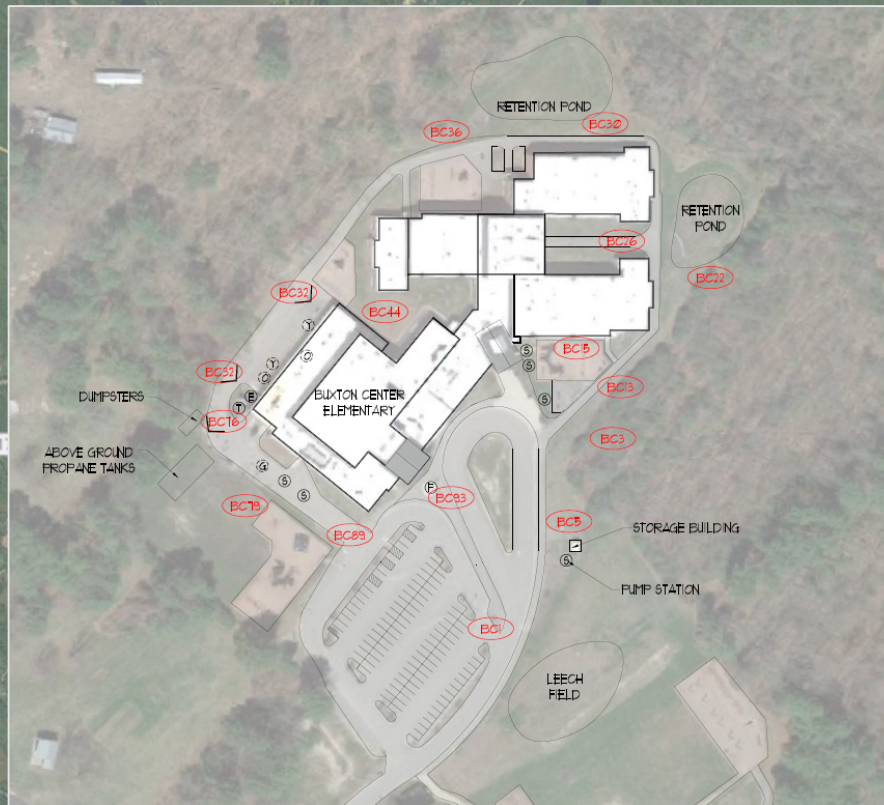
LOCATION

Hollis, ME



Buxton Center Elementary School: Dashboard

| BUXTON CENTER ELEMENTARY SCHOOL | |
|---------------------------------|------------|
| GRADE LEVEL CONFIGURATION | PK-5 |
| # OF STUDENTS | 547 |
| LOCATION | Buxton, ME |



Steep Falls Elementary School: Dashboard

| STEEP FALLS ELEMENTARY SCHOOL | |
|----------------------------------|--------------|
| GRADE LEVEL CONFIGURATION | K-3 |
| # OF STUDENTS | 58 |
| LOCATION | Standish, ME |



Edna Libby Elementary School: Dashboard

| EDNA LIBBY ELEMENTARY SCHOOL | |
|---------------------------------|--------------|
| GRADE LEVEL CONFIGURATION | PK-3 |
| # OF STUDENTS | 265 |
| LOCATION | Standish, ME |



H.B. Emery Jr. Memorial School: Dashboard

H.B. EMERY JR. MEMORIAL SCHOOL

GRADE LEVEL
CONFIGURATION

PK-5

OF STUDENTS

215

LOCATION

Limington, ME



George E. Jack School: Dashboard

GEORGE E. JACK SCHOOL

GRADE LEVEL
CONFIGURATION

4-5

OF STUDENTS

160

LOCATION

Standish, ME



3 Overview of Process

3

List of Tasks

- Enrollment Study
- Space Utilization and capacity analysis
- Educational Visioning and Program Analysis
- Facility Condition Analysis
- Financial and Energy Use Analysis
- Options Evaluation
- Master Plan Development (A, B,C)
 - Master Plan Draft TOC
- Website Development
- Community Engagement

Visioning Kick-Off Meeting Summary

Initial Listening +
Educational Discovery

Priority Heart
Mapping

Educational Vision

Educational
Environment

Educational Specifications

- **33 School and District Administrators / Staff**
 - **Representing 4 Groups (District, Elementary, Middle, High)**
- **Recapped 1st Visioning session**
- **Had group discussions to:**
 - **Explore what MSAD 6's Strategic Goals #1 and #6 look like in action.**
 - **Identify vision of engaging and authentic learning at each grade level.**
 - **Identify space types and features to support engaging and authentic learning**

Visioning Recap of Overall Goals

Initial Listening +
Educational Discovery

Priority Heart
Mapping

Educational Vision

Educational
Environment

Educational Specifications

Increased efficiency and equity with **newer/fewer buildings** and **centralized** locations (34 votes)

Schools and sites as **resources for extracurricular** events, **community**, and **BE pride** (29 votes)

Improved instruction and climate through **differentiation**, **innovation**, **safety**, and **security** (20 votes)

Increased efficiency and equity with **full-time staffing** (11 votes)

Increased **flexibility**, educationally and spatially, **to promote learning** and **collaboration** (11 votes)



Visioning Strategic Goals in Action

Initial Listening +
Educational Discovery

Priority Heart
Mapping

Educational Vision

Educational
Environment

Educational Specifications

Strategic Goal 1: “Help all students find success through high impact **instructional strategies**, **curriculum alignment**, and varied **educational opportunities**.”

- STEM curriculum PK-12
- Hands-on learning experiences
- Project-based learning

Reoccurring Responses:
Community
Collaboration
Technology
Flexibility

Strategic Goal 6: “Create **innovative learning opportunities** for students to prepare them for an ever-changing world.”

- Real-world applications
- Interdisciplinary opportunities
- New opportunities and pathways
- Flexibility of learning spaces and schedules to best support student needs
- Educational pathways

Visioning Strategic Goals in Action

Initial Listening +
Educational Discovery

Priority Heart
Mapping

Educational Vision

Educational
Environment

Educational Specifications

Strategic Goal 2: “Better support the changing **social, emotional, and educational needs** of our students...”

- Curriculum that reflects 21st century skills
- Incorporate self-regulation strategies into the learning environment
- Flexible educational environments to meet student needs

Reoccurring Responses:

Community
Exploration
Flexibility
Varying Learning Spaces



Cooperation



Assertiveness



Responsibility



Empathy



Self-Control



©2020 CASEL. ALL RIGHTS RESERVED.

Visioning: Building Organization & Academic Features

Initial Listening +
Educational Discovery

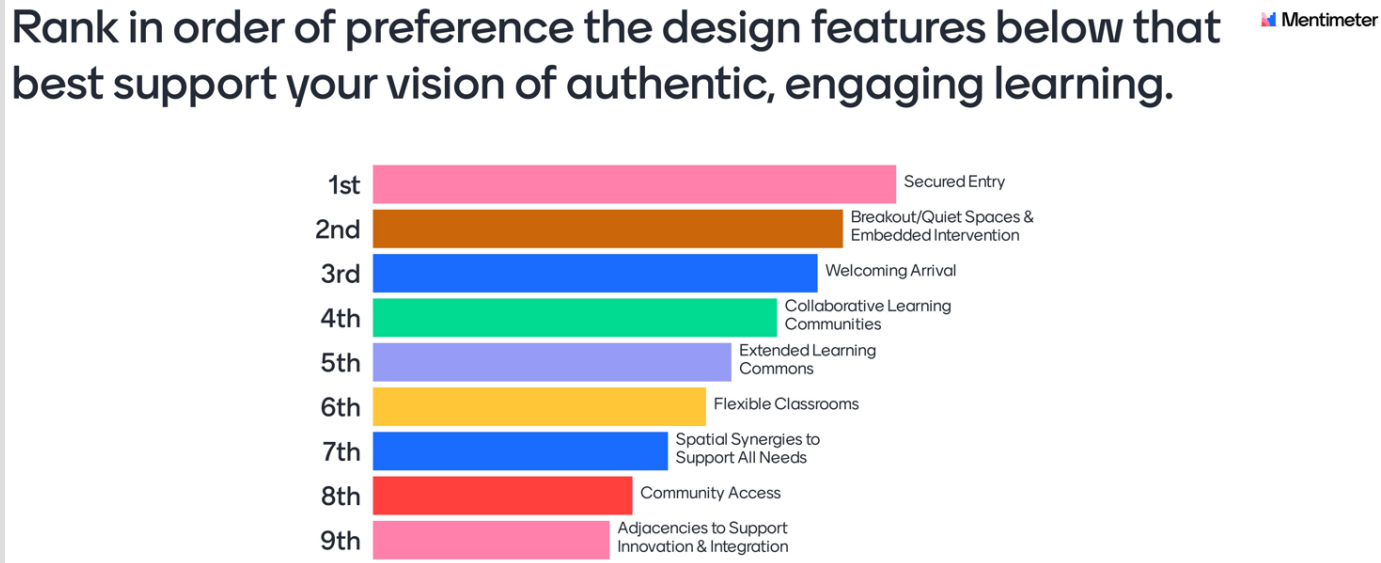
Priority Heart
Mapping

Educational Vision

Educational
Environment

Educational Specifications

Individuals were asked to rank numerous images that best support your vision of authentic, engaging learning.



Visioning: Building Organization & Academic Features

Initial Listening +
Educational Discovery

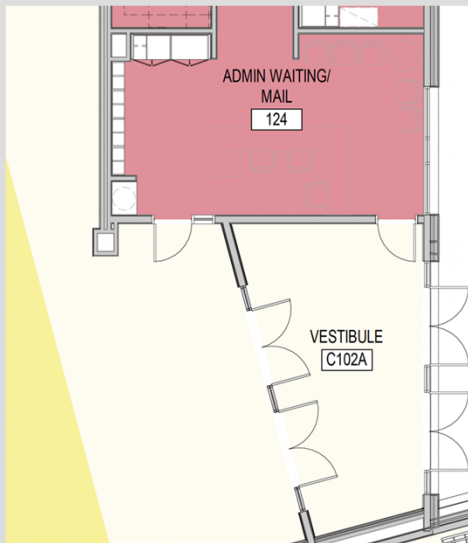
Priority Heat
Mapping

Educational Vision

Educational
Environment

Educational Specifications

Images that were shared from the top 3 results.



Secured Entry



Breakout/Quiet Spaces & Embedded Intervention



Welcoming Arrival

Visioning: Socially/Emotionally Responsive Building Features

Initial Listening +
Educational Discovery

Priority Heart
Mapping

Educational Vision

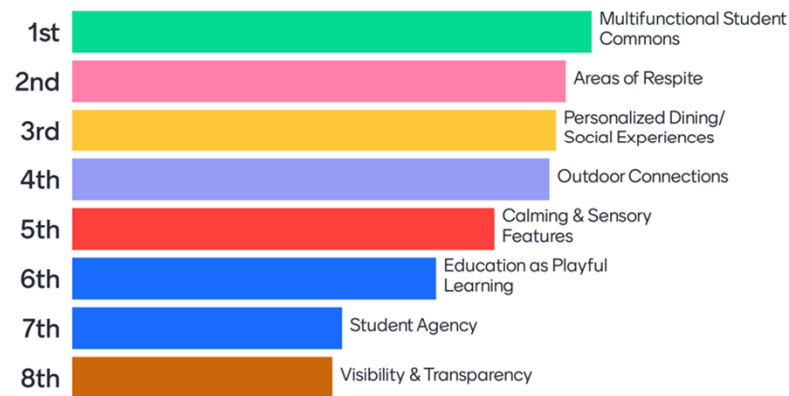
Educational
Environment

Educational Specifications

Individuals were asked to rank numerous images that best support your vision of social-emotional learning.

Rank in order of preference the design features below that best support your vision of social-emotional learning.

Mentimeter



Visioning: Socially/Emotionally Responsive Building Features

Initial Listening +
Educational Discovery

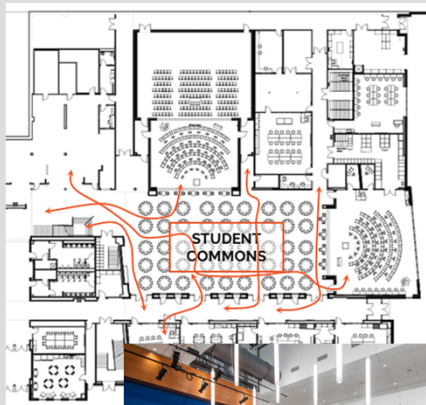
Priority Heart
Mapping

Educational Vision

Educational
Environment

Educational Specifications

Images that were shared from the top 3 results.



Multifunctional Student Commons



Areas of Respite



Personalized Dining/ Social Experiences

Educational Programming: Principal Meeting Summary

Overview of Principal's meeting for Bonny Eagle High School



- Safety and Security
- No clear organization
- Athletic weight room inadequate (desire cardio room)
- Building circulation issues (wayfinding and one means of circulation- congestion)
- Accessibility
- Band room inadequate (space, acoustics, access).
- Desire to centralize admin.
- Site circulation (student parking / bus/ traffic)
- Toilet room concerns (lack of, single user, etc.)
- Locker room qty and utilization
- Lack of meeting and conference space
- Desire to have diverse eating spaces
- Desire to have second gym space and Classroom adj to gym
- Desire for state of the are performing arts center
- Have all programs within the building and not in portables
- Desire for greater flexibility
- SPED space modifications - Transitional classroom for 22-year-olds
- Lack of Storage

Options Evaluation

Harriman:

- Develop draft options
- Cost estimating of options
- Financial Modeling of options
- Life Cycle Cost Analysis

MSAD 6:

- Brainstorm options with Harriman
- Provide feedback and direction on draft options

Approximate Duration: 3 months

Options Evaluation: Example

Scarborough Public Schools Facilities Master Plan

| | | Current | Option A | Option B | Option C | Option D |
|---|--|--|---|--|--|---|
| | | Grades, Student Population & Capacity in Fall 2017 | <i>Do nothing but add modulars. Primary schools to be PreK-2 on exist'g sites. SMS would also do nothing but keep adding modulars to the site. All exiting space and site problems intensify greatly.</i> | <i>Renovate Existing K-2 Primary Schools in place on Existing Sites Right size the SMS, keep Gr. 6-8 Includes 5% growth contingency.</i> | <i>Create new Consolidated K-2 Primary School Right size the SMS, keep Gr. 6-8</i> | <i>Create new Consolidated PreK-2 Primary School Right size the SMS, keep Gr. 6-8</i> |
| 1 | Scarborough Middle School SMS | Gr 6-8 731 St. (Capacity +/- 700 to 750, see notes) | Gr 6-8 772 St. in 2025-26 | Gr 7-8 488 St. in 2025-26 Move 6th grade to WIS, reduces work at SMS substantially | Gr 6-8 736 St. in 2025-26 Right size the SMS, expand and address shortcomings | Gr 6-8 736 St. in 2025-26 Right size the SMS, expand and address shortcomings |
| 2 | Wentworth Intermed. School WIS | Gr 3-5 647 St. (Capacity 800 St.) | Gr 3-5 792 St. in 2025-26 | Gr 4-6 814 St. in 2025-26 Remains 3 grades but now 4-6 | Gr 3-5 755 St. in 2025-26 Remains as is with 3 grades. | Gr 3-5 755 St. in 2025-26 Remains as is with 3 grades. |
| 3 | Blue Point Primary BPP | Gr K-2 194 St. (Capacity 241 St.) | Gr PreK-2 305 St. in 2025-26, (+111) Would have 10 modulars. | Gr PreK-3 392 St. in 2025-26, (+198) Right size BPP, expand and address shortcomings | Closes | Closes |
| 4 | Eight Corner Primary ECP | Gr K-2 227 St. (Capacity 236 St.) | Gr PreK-2 349 St. in 2025-26, (+122) Would have 13 modulars. | Gr PreK-3 447 St. in 2025-26, (+220) Right size ECP, expand and address shortcomings | Closes | Closes |
| 5 | Pleasant Hill Primary PHP | Gr K-2 175 St. (Capacity 178 St.) | Gr PreK-2 288 St. in 2025-26, (+113) Would have 8 modulars. | Gr PreK-3 365 St. in 2025-26, (+190) Right size PHP, expand and address shortcomings | Closes | Closes |
| 6 | New Consolidated Primary School New CPS | N/A | N/A | N/A | Gr K-2 746 St. in 2025-26 New Consolidated K-2 school | Gr. PreK-2 896 St. in 2025-26 New Consolidated PreK-2 school |

Options Evaluation: Example of Final Solution

Yarmouth School District Master Plan for Four Schools

Yarmouth High School - Remains 9-12; Expansion of two-story classroom wing, new band room, expansion of flex room and cafeteria, relocation of weight room, and additional parking.



Yarmouth High School

■ Addition
■ Renovation

Yarmouth Elementary - Becomes 2-5; Addition of 2-story classroom wing, new gym, new music room, major renovation of existing structure, new parking/traffic patterns.



Yarmouth Elementary School

■ Addition
■ Renovation

Harrison Middle School - Becomes 6-8 only. Additional classrooms eliminate the need for portables and hallway classrooms.



Harrison Middle School

■ Addition
■ Renovation

Rowe School - Expands to allow for enrollment increases and provide some space for CDS programming.



Rowe Primary School

■ Addition
■ Renovation

Community Engagement

Forums

- #1: Overview / Visioning – *Today*
- #2: What Ifs? – *June 14th*
- #3: Project Update / Draft Options – *Late September*
- #4: Project Update / Refined Options – *Early November*
- #5: Presentation of Final Report – *Early December*



4 Schedule

4

Schedule

- **Next Opportunities for Community Engagement:**
 - **Community Forum #2: Participate in “What Ifs” Discussion** (June 14, 2023)
 - **Participate in ThoughtExchange around “What Ifs” Discussion** (Summer 2023)
 - **Community Forum #3: Project Update/Draft Options** (Fall 2023)
- **Enrollment Study:** Ongoing (Summer 2023)
- **Space Utilization:** Ongoing (Summer 2023)
- **Educational Programming:** Ongoing
 - **Visioning Sessions 1 and 2** (Complete)
- **Facility Assessments:** Ongoing (Summer 2023)
- **Energy and Financial Analysis:** Ongoing Data Collection (Summer 2023)
- **Evaluating Options:** Pending Completion of Data Collection
- **Master Plan Development:** Pending Completion of Data Collection

5 Discussion

5

Discussion

What steps do YOU think the District needs to take to achieve the project goals...?

PROJECT GOALS:

- Determine the most effective use of resources now and in the future.
- Plan supported by community and backed up by data
- Explore all options
- Solutions driven by:
 - Enrollment Projections
 - Pedagogy
 - Increased efficiency and equity with newer/fewer buildings and centralized locations
 - Schools and sites as resources for extracurricular events (athletics, the arts, etc.), community, and BE pride
 - Improved instruction and climate through differentiation, innovation, safety, and security
 - Increased efficiency and equity with full-time staffing
 - Increased flexibility, educationally and spatially, to promote learning and collaboration
- Align with State funding sources - Be prepared for 2024 State application

6 Next Steps



Next Steps

- Complete Programming Meetings with Principals
- Continue Data Collection for O&M
- **Next Community Forum: Wednesday, June 14 from 6-8PM at the BEHS Gym**
 - *Can't join the forum? Participate in the ThoughtExchange discussion.*